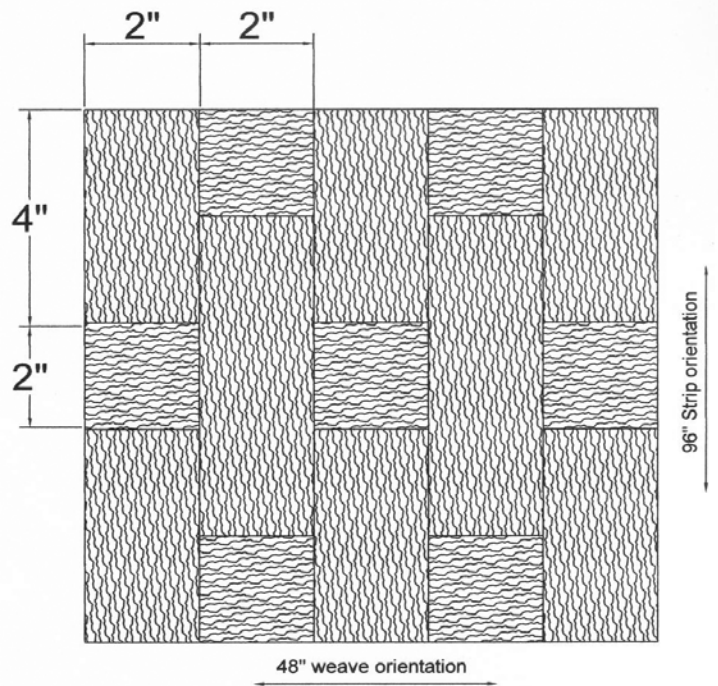
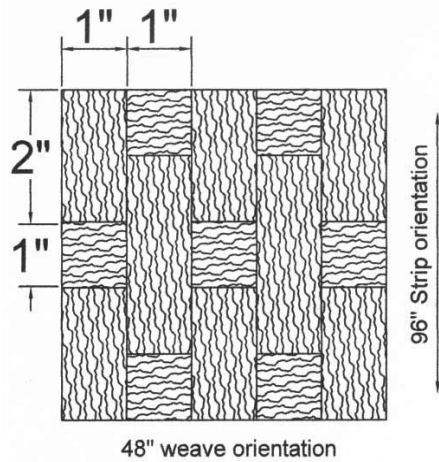


RIGID BACKED WEAVES - SPECIFICATIONS



- * **ALL HAND WEAVES REQUIRE A CAPTURED BORDER OR FRAME**
- * **BACKERS AVAILABLE IN VENEER OR MELAMINE FOR ADDITIONAL UPCHARGE**
- * **AVAILABLE IN: CHERRY, WALNUT, MAPLE, OAK, AND ENGINEERED WENGE PHENOLIC BACKED VENEERS**
- * **CUSTOM SIZES ARE NOT AVAILABLE**
- * **PANEL DIMENSIONS ARE 48" X 96" X $\frac{3}{8}$ " NOMINAL**
- * **APPLICATIONS: DOOR INSERTS, WALL PANELS, CEILING PANELS, PRIVACY SCREENS, ARCHITECTURAL MILLWORK, AND FURNITURE INLAYS**
- * **DISCLAIMER: WOOD VENEERS ARE NOT SELECTED FROM INDIVIDUAL FLITCHES, THEREFORE VARIATIONS IN COLOR, GRAIN, TEXTURE, AND FIGURE WILL OCCUR WITHIN THE SELECTED WEAVES. THE WEAVES ARE HAND WOVEN, THEREFORE PANEL ALIGNMENT WITHIN A GIVEN PATTERN CANNOT BE GUARANTEED FROM PANEL TO PANEL. IT IS THE RESPONSIBILITY OF THE DESIGN PROFESSIONAL TO INCORPORATE FRAMES, REVEALS, ETC... AS NEEDED TO ACHIEVE THE DESIRED EFFECT.**

RIGID BACKED WEAVES

SMALL WEAVE 1" WIDE STRIPS



SWL11

LARGE WEAVE 2" WIDE STRIPS



SWB12

VENEER WEAVES

- * **HAND WOVEN VENEERS**
- * **PREMOUNTED ON 1/4" MDF**
- * **BACKSIDE RAW UNLESS OTHERWISE SPECIFIED**



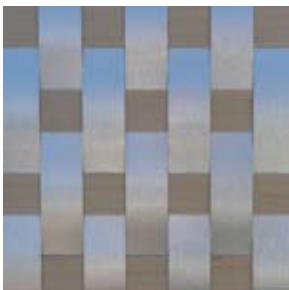
SML20



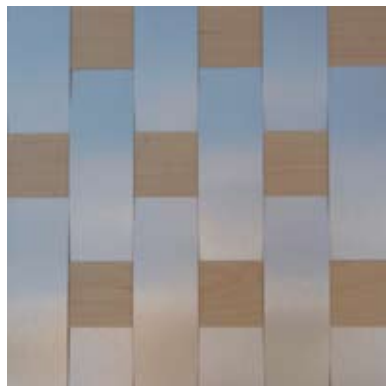
SMB20

METAL WEAVES

- * **HAND WOVEN BRUSHED ALUMINUM**
- * **PREMOUNTED ON 1/4" FIBERBOARD**
- * **BACKSIDE RAW UNLESS OTHERWISE SPECIFIED**



SXL10



SXB10

METAL & VENEER WEAVES

- * **HAND WOVEN BRUSHED ALUMINUM AND PREFINISHED VENEERS**
- * **PREMOUNTED ON 1/4" FIBERBOARD**